



Advocate

The Disability Resource Center Newsletter • San Luis Obispo • Fall 2003

In this Issue

1

New Adaptive
Technology Center

2

New Student Open House
Rights/Responsibilities Quiz

3

Study Skills
A Summer Away

4

Graduation Checklist
Career Services
Student Survey Results

5

Honorarium Program

6

Quiz Answers
New Relay Services

7

Winter Scheduling
Test Deadlines

8

Our Staff

New Adaptive Technology Center



From left to right: Dr. Hiram Davis, Shelley Aleshire, William Bailey, Joan Kunkler, Tom May

News flash! Anyone who has worked in the tiny Adaptive Technology Center, located on the second floor of Kennedy Library, will fully appreciate the news that, with the beginning of classes this fall, users will now have access to *two* spacious rooms—with more maneuverability (for wheelchairs), more light and more breathing room. When Dr. Hiram Davis, Dean of the Library, agreed to donate the space, William Bailey, Director of DRC, quickly agreed to provide the funding, and a successful collaboration was born. This summer, Tom May, of Facility Services, has been hard at work coordinating the construction of the new site with Joan Kunkler, Library Assistant.

The Center will still be located on the second floor, just past the Learning Resource desk in the northwest corner. Both rooms have several windows, looking out onto the main floor as well as to the outside. As one might imagine, there had been problems when a student using screen-reading technology was forced to work in the same room with someone else wanting to use a voice-activated system. The new walls are soundproofed, and there is enough space to allow a five-foot turning radius for people in wheelchairs. There will be plenty of room for the equipment, which includes computers with screen-reading and screen enlarging programs,



Adaptive Lab Technicians



Elinor Howard



Tommy Zimmerman



Melissa McGrath



New Student Open House

Date: Wednesday Sept. 17th, 2003

Time: 3:00 - 4:30 p.m.

Place: Disability Resource Center,
Bldg. 124 (across from Mustang Stadium)

- enjoy some cool refreshments
- meet DRC staff
- learn about important campus resources and fall quarter deadlines
- meet other new students



continued from p.1

a voice activated system, Braille printer, closed circuit TV for print magnification, an optical character scanner and a tactile image enhancer.

Shelley Aleshire, DRC advisor, will continue to supervise the Adaptive Tehnology Center, and coordinate the schedules of our lab technicians. We are excited to be able to offer this new work space, and hope you will drop by to see the improvements.

Rights and Responsibilites: A Quiz

As a student with a disability, you need to be well-informed about your rights and responsibilities, as well as the responsibilities that postsecondary schools have toward you. Being well-informed will help ensure that you have the full opportunity to enjoy the benefits of the postsecondary education experience without confusion or delay. Take the following true/false quiz to see where you stand.

- 1) I do not have to tell anyone that I have a disability.
- 2) Once I have been identified with a disability, I can receive extended time and notetaking for all of my classes.
- 3) I can request an academic adjustment at any time.
- 4) I should talk to my professors if I want an academic adjustment.
- 5) I am not satisfied with the notes for my class, but I don't want to make waves, and there's nothing I can do about it anyway.
- 6) Fees for the services I use will be billed to my student account at the end of the quarter.

Answers on Page 6



Strong Study Skills - The Key to Success

Do you wish that you had more confidence in your study skills? There are lots of resources available to motivated students. (Or, if motivation itself is a problem, you can work on that, too.) In addition to the study skills seminars offered by Cal Poly's Academic Skills Center (Fisher Science 292), we can recommend two websites that offer some practical suggestions on such topics as: Overcoming Procrastination, Memory Devices and Controlling Test Anxiety. Here is a sample tip from The Academic Center for Excellence at the University of Illinois at Chicago:

For Improving Memory, try **The Method of Loci**: (for approximately twenty items)

Select any location that you have spent a lot of time in and have easily memorized. Imagine yourself walking through the location, selecting clearly defined places—the door, sofa, refrigerator, shelf, etc. Imagine yourself putting objects that you need to remember into each of these places by walking through this location in a direct path. Again, you need a standard direct path and clearly defined locations for objects to facilitate the retrieval of these objects. For example if you had to remember George Washington, Thomas Jefferson, and Richard Nixon, you could imagine walking up to the door of your location and seeing a dollar bill stuck in the door; when you open the door Jefferson is reclining on the sofa and Nixon is eating out of the refrigerator!

Find more at the UIC website:

www.uic.edu/depts/counselctr/ace/practic1.htm

Also be sure to check out the website for Austin Learning Center at the University of Texas:

www.utexas.edu/student/utlc/handouts.html

There you will find: Study Tips for History, Writing for Specific Subjects, Reading in the Sciences, and much more.

A Summer Away

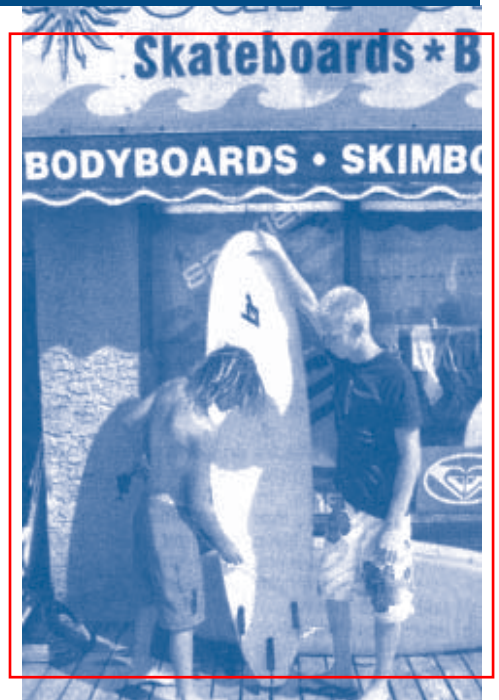
Cian Moroso is a perfect example of a motivated, energetic and caring young Cal Poly student. He wrote to share his summer experiences with his DRC advisor, Ann Fryer, some of which are summarized here:

Cian is a Natural Resource Management major who works hard during the academic year, but enjoys doing something completely different from school during his summer breaks. Last year he worked in the U.S. Forest Service as a firefighter in the Los Padres National Forest. During that time, he went with his crew on over ten wildfires, ranging in size from one to 150,000 acres. It was “grueling hard work, but (he) love(s) the outdoors and it fulfilled (his) internship requirement.”

An active participant in Campus Crusade for Christ, Cian decided this year to

participate in the Ocean City, New Jersey, Summer Project, a program designed to “push, challenge and stretch us daily so that when we return to school, we are much more mature in our knowledge and in our faith.” He worked full-time at a local surf shop during the day —teaching surf lessons to tourists and doing so well that he quickly moved up to a manager position and started opening the shop.

In the evenings, he took part in Project meetings, action groups, Bible Study and outreach activities. The involvement was intense and inspiring, and Cian came back feeling that he had “many new tools and techniques which I can take back and share with the students at Cal Poly.” We are willing to bet that Cian is returning to Poly refreshed and motivated to succeed because, as he says,



“Traveling to new places, meeting new people, and constantly learning new things has completely transformed my outlook on life.”

Cian Moroso, right



Graduation Checklist & Career Services



Senior Checklist

Are you beginning to see light at the end of the tunnel? Is your graduation date beginning to seem a reality? Be sure to plan ahead so that your final quarters go smoothly, and there are no unpleasant surprises at the end.

The Almost Alumni Handbook and Web Site are published each year by the Alumni Association and Cal Poly as a resource for seniors to guide them through a productive and successful graduation year. The handbook is also meant as a resource to recent graduates, highlighting services available to Cal Poly alumni.

Included is a Senior Checklist, beginning

with “Six Quarters Before Graduation”, that provides students with a list of things to do for each of the subsequent quarters. This can be reassuring for those who want to make sure that nothing is left hanging.

www.almostalumni.calpoly.edu/pages/checklist.html

Printed copies of the Almost Alumni Handbook are free and can be picked up at the Alumni Office, Career Services, Evaluations Office, Financial Aid Office and El Corral Bookstore.



Career Services

Career Services counselors are your friends, and they are conveniently located

in the same building as the Disability Resource Center. The next time you make the trip down here to turn in your test forms or to meet with your DRC advisor, you can, in the same trip, take advantage of a wide range of services that will help you prepare for transitioning from the university to the world of work.

Check their website for updated information about resume and interview workshops; plan to attend job fairs that provide opportunities to meet with potential employers; place your resume online and set up campus interviews; receive guidance from the Career Counselor for your college.

www.careerservices.calpoly.edu/

Student Survey Results

Our thanks to those of you who participated in the annual DRC *Student Satisfaction Survey* held this past June. We received over 135 completed surveys, providing us with valuable information about how our programs are meeting the needs of students with disabilities. Over the last several years, the DRC has conducted yearly large-scale satisfaction surveys geared towards gathering input from *every* DRC student.

Congratulations to three lucky DRC students whose names were selected in a drawing of students returning surveys! Prize winners were Jim Tomkins (MP3 Player), Darsie Damerel (\$30.00 gift certificate for Boo Boo’s Records) and Joel Hernandez (\$20.00 gift certificate to Julian’s Coffee Shop).

We are pleased to report that DRC services again received high marks from our students. Seven key service areas were assessed by respondents on scale from *zero* to *six*, with *six* reflecting complete satisfaction. “Benchmark” satisfaction ratings have been established for each service area and were as follow for our latest survey:

- Office Reception Area Staff: 5.24
- Academic/ Personal Advising: 5.42
- Texts on Tape: 4.96
- Note Taker Services: 4.71
- Accommodated Testing: 5.29
- On-Campus Tram Service: 5.08
- Adaptive Equipment: 5.17

We are especially pleased to note that when asked whether or not they would recommend our services to a friend, respondents overwhelmingly (5.63) agreed that they would.

For the second year in a row, the DRC has included questions designed to assess how responsive the campus is to students with disabilities. Known as the Campus Climate benchmark, this new measure includes two key questions: *How willing were your professors to accommodate requested accommodations?* And, *How responsive is the campus to students with disabilities?* The aggregate benchmark score this year fell slightly to 4.87 from 4.90 (with 6.0 representing complete satisfaction).

By responding to our surveys, you have helped us in our efforts to provide quality services that support your academic and personal success. We hope this fall is the beginning of a successful and productive year for all of you!

2003-2004 Honorarium Program

This year we will celebrate the 15th consecutive year in which honoraria have been awarded to DRC students who have excelled academically, been actively involved in campus and community activities, and are in need of financial assistance. In 1988, The Disabled Students Advisory Committee renamed to the Students With Disabilities Advisory Committee), in partnership with corporate sponsors - composed primarily of employers who recruit at Cal Poly - began this program, designed to provide funds to deserving students.

There were a number of factors that led to the establishment of the honoraria program. It was – and continues to be - increasingly obvious that working one's way through college is no longer a viable option, especially in San Luis Obispo, which has a higher than average cost of living. Also, since the majority of on-campus and community jobs only pay minimum wage, students' need for additional funding became evident.

In addition, with both education costs and student indebtedness increasing yearly, we know that students will be faced with significant economic burdens upon graduation. To help put into perspective what students face, here are some statistics:

- The typical three quarter budget for 2003-2004 for an undergraduate student at Cal Poly has risen again, to a total of \$14,802 (an increase from last year's \$13,608), against the background of an uncertain economic outlook.
- For the 2002-2003 academic year, approximately 50% of Cal Poly students received financial aid, totaling over \$63,000,000, and as in the larger population, 60% of those loans are unsubsidized, which means they must be repaid, with interest, in full.
- Even more amazing than that statistic is the fact that there was still an average unmet need per

student of \$3800.00, which helps to explain why by graduation a typical Cal Poly student will have amassed a total debt of between \$15,000 and \$20,000. In reality, many will have loans far in excess of that amount.

Through the honoraria program, close to \$86,000 has been awarded to 253 students. Last year, because of the generosity of our donors, we were able to provide 14 students with \$400.00 each. In early November, applications will be sent by mail. If you are interested in being considered for an honorarium, fill out the application and return it to the DRC office by **Thursday, January 22, 2004**.

If you would like additional information about the program or want to make a donation, contact Will Bailey at (805) 756-1395.

Better keep yourself clean and bright; you are the window through which you must see the world. - George Bernard Shaw (1856-1950)



Answers to Rights and Responsibilities Quiz

1) True. Your disclosure of a disability is always voluntary. However, if you want the school to provide an academic adjustment, you must identify yourself as having a disability. The first step is to complete the DRC Application Form, available online at drc.calpoly.edu or in our office, located in the Student Services Building #124. You will be required to provide documentation of your disability at that time.

2) False. SOME students with disabilities may receive extended time and/or note taking services, but appropriate accommodations are determined on an individual basis. Once DRC receives your documentation, it is reviewed by an academic advisor, who will recommend support services based on your individual needs. During your initial *intake appointment*, the policies and procedures for using these services will be thoroughly

explained and discussed with you.

3) True. You may request an academic adjustment through the DRC at any time, but we strongly recommend that you request it as early as possible. Some accommodations may take more time to provide than others. Policies and procedures for utilizing DRC services may be viewed on our website at: drc.calpoly.edu/services/index.html

4) True. The cooperation of your professor is critical to the effective delivery of support services. For example, if you are using books on tape, you should contact the professor before classes begin for his/her syllabus so the books can be read in advance.

5) Talk with the DRC front office or your DRC advisor as soon as you become aware that the results of an accommodation are not what you expected. It may be too late to correct

the problem if you wait until the course is too far along. The DRC staff wants to work with you to resolve your concerns. If you feel that a problem has not been satisfactorily resolved, there is a grievance process that you may follow. Again, see our website: drc.calpoly.edu/enrolled/resolving.html

6) False. There are no fees for DRC services.

Students with disabilities who know their rights and responsibilities are much better equipped to succeed in college. We encourage you to work with the DRC staff because we, too, want you to succeed.

Students with Disabilities Preparing for Postsecondary Education: Know Your Rights and Responsibilities was the source for the above information. This pamphlet is available by contacting Chris at 756-1399.

New Relay Services for Deaf/Hard-of-Hearing People

Several deaf and hard of hearing students at Cal Poly are now taking advantage of some new relay services that you should know about.

IP-RELAY VRS provides the ease of using sign language to communicate while leveraging the high speed of the Internet.

- Communicate in native sign language
- Converse in natural flow
- View facial expressions and cues
- Choose the speed of conversations
- Place video relay calls confidentially

IP-RELAY Text “Call Now” gives you the fastest and easiest way to place a call over the Internet.

- Connect instantly
- Make multiple calls
- Choose between split or single screen view
- Print and save conversations
- Place calls confidentially; when they terminate in the U.S. and its territories, they are free of charge

IP-RELAY Voice software can be downloaded and installed; this allows a user to:

- Receive incoming relay calls
- Communicate with TTY users
- Create and store contacts in phone book
- Receive instant messages from other IP-RELAY Voice users

Voice callers can reach you by calling a toll free number from anywhere in North America. IP-RELAY Voice makes staying in touch all that easier!

Check it out: **IP-RELAY.com**



Winter Scheduling

The Winter Class Schedule will be on sale in El Corral Bookstore on Monday, October 17th. Registration for Winter quarter begins on October 22nd. Think about contacting your DRC advisor now to discuss your ideas and get some feedback about what you are proposing. The DRC office number is 756-1395.

Be prepared when you get here: have a copy of your major curriculum sheet, a flow chart (if there is one), and a tentative list of courses that you might like to take. Take a look at the pre-requisites by checking in the back of your catalog.

Ask yourself: Is my schedule balanced? Do I have a GE class, a major class, and a support class? Am I limiting my labs to no more than two? Do I have breaks in my schedule so that I can eat or review notes and class materials?

We recommend that you also meet with your department advisor to find out about major courses or advisor approved electives.

COLLEGE OF AGRICULTURE:
756-2161

COLLEGE OF ARCHITECTURE & ENVIRONMENTAL DESIGN:
756-1325

COLLEGE OF BUSINESS:
756-2601

COLLEGE OF ENGINEERING:
756-1461

COLLEGE OF LIBERAL ARTS:
756-6200

COLLEGE OF SCIENCE AND MATH:
756-2615

DRC Advisors



Shelley Aleshire



Ann Fryer



Dr. Steve Kane



Chris
Parker-Kennedy

Testing Accommodations For Upcoming Tests

The Fall Quarter 2003 **Writing Proficiency Exam (WPE)** is offered Saturday, October 11th, and the registration deadline is Friday, October 3rd. A special administration is available through our office for eligible DRC students on that same day, but you must sign up ahead of time in our office.

Plan ahead — The Winter Quarter 2004 WPE administration date is Saturday, January 24th; the registration deadline is Friday, January 16th. The Spring Quarter 2004 WPE administration date is Saturday, April 10th; the registration deadline is Thursday, April 8th.

Check the Writing Skills website (<http://www.calpoly.edu/~wrtskills/>)

discussing workshop presentations and individual assistance available through the Writing Skills Lab (10-136) during the regular academic year. You may also request writing skills assistance by speaking to your DRC advisor. For additional information, refer to your class schedule each quarter.

If you need special **ELM** and/or **EPT** accommodations, contact your DRC advisor to discuss specific arrangements. If approved for special accommodations, turn in your registration form to the DRC front desk by the registration deadline date. DRC will deliver the forms and requests for specific accommodations to

the Assessment and Testing Office. If you have questions or concerns regarding the date, time and place of the exam, please contact the Assessment and Testing Office at Bldg. 124- Room 121 or x-61551.

Finally, if you need special accommodations for graduate school, professional examinations, or credential programs (i.e., **GRE, CBEST, LSAT, MCAT, EIT**, et al.), contact your DRC advisor at least two weeks before the registration deadline. Often specific assessment information and history of service provision must be reviewed before the requests for specific accommodations can be completed and submitted.

Disability Resource Center
Student Services Bldg, 124
Cal Poly, San Luis Obispo
93407

DRC Staff

DIRECTOR



William
Bailey

Secretary



Megan
Grundbrecher

Alternative Media Coordinator



Debie
McArdle

Support Services Coordinator

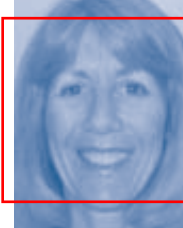


Donna
Weltmer

Sign Language Interpreters



Abby Kopp



Kathy Hannula



Laurie Walcott

Clerical / Tram Drivers



Tim Ahn



Danny Carlton



Will Deviny



Mauricio Ortiz



Kevin Robertson

Taylor Casper
No Picture
Available



Lori Hicks

Cued Language Transliterators



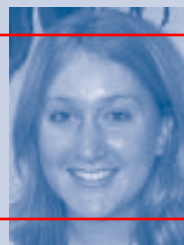
Maya Salmon



Paul Shandi



Amy Sprigg



Erin Williams

Graphic Designer



Jonathan Fan



Jessica Van Dyke



Julia Van Alfen

Taped Text Assistants